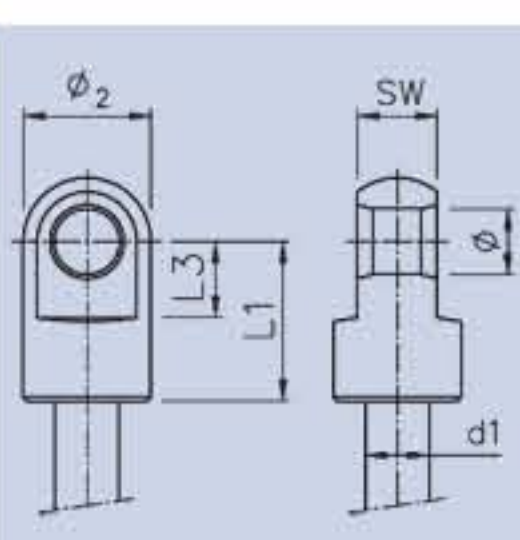


Stainless steel connecting parts

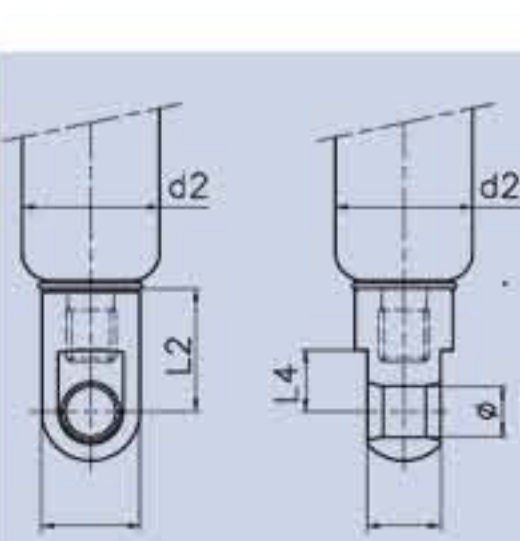
Piston rod hinge eyes (Material 1.4404/AISI 316L)

code	SW	Ø	L1	L3	Ø2	d1	thread	suitable for gas springs	suitable for lockable gas springs	suitable for gas traction springs
D1	3	6,2	16	9	11	6,0	M5	x		
A1	10	8,2	20	20	16	8,0-10,0	M8	x		x
M2	10	10,2	20	20	16	8,0-10,0	M8	x		x
B1	12	8,2	25	12	19	10,0-14,0	M10	x		x
K2	12	8,2	20	20	19	10,0-14,0	M10	x		x
C1	14	14,2	40	20	20	14,0-20,0	M14*1,5	x		x



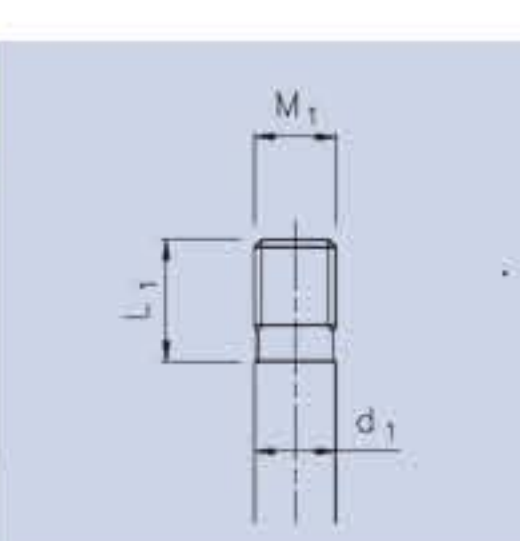
Hinge eyes cylinder (Material 1.4404/AISI 316L)

code	SW	Ø	L2	L4	Ø2	d1	thread	suitable for gas springs	suitable for lockable gas springs	suitable for gas traction springs
D1	3	6,2	16	9	11	15,0	M5	x		
A1	10	8,2	20	20	16	19,0-22,0	M8	x	x	x
M2	10	10,2	20	20	16	19,0-22,0	M8	x	x	x
B1	12	8,2	25	12	19	28,0-40,0	M10	x	x	x
K2	12	8,2	20	20	19	28,0	M10	x	x	x
C1	14	14,2	40	20	20	40,0	M14*1,5	x	x	x



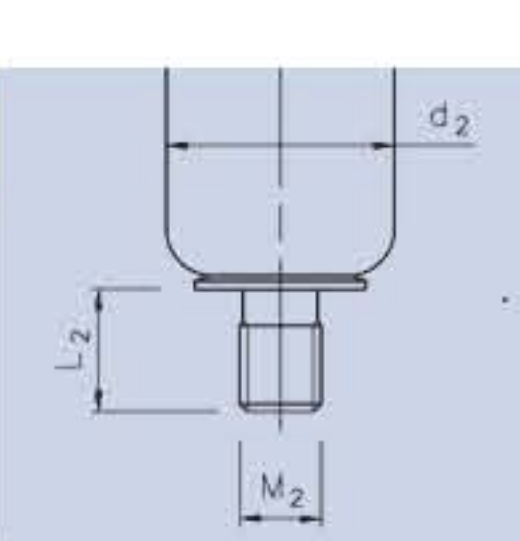
Threads piston rod side (Material 1.4404/AISI 316L)

code	M2	L1	d1	suitable for gas springs	suitable for lockable gas springs	suitable for gas traction springs
V0	M5	5	6,0	x		x
B0	M8	9	8	x		
H0	M8	9	10,0	x		
D0	M10	9	10,0-14,0	x		x
Z0	MF14*1,5	15	20,0	x		x



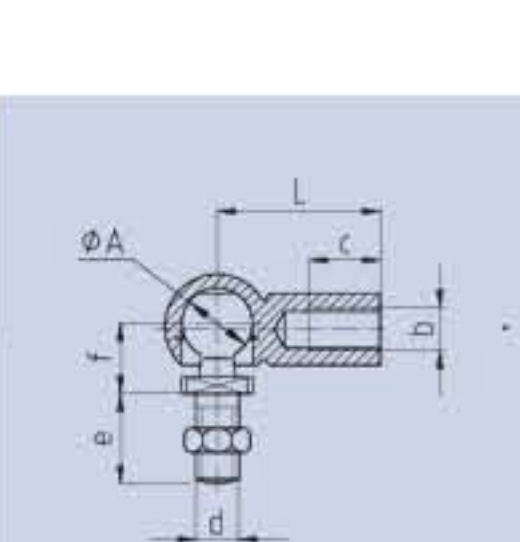
Threads cylinder side (Material 1.4404/AISI 316L)

code	M2	L2	d2	suitable for gas springs	suitable for lockable gas springs	suitable for gas traction springs
V0	M5	5	15,0	x		
D0	M10	9	28,0	x	x	x
Z0	MF14*1,5	15	40,0	x	x	x
M0	M10	13	28,0	x	x	x
M0	M10	13	40,0	x	x	x
N0	M8	8	19,0-28,0	x	x	x



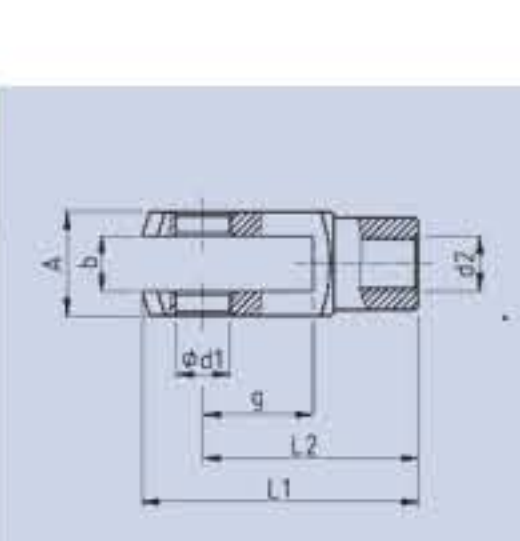
Elbow joints (Material 1.4305/AISI 303)

code	AØ	L mm	b*c mm	d*e mm	f mm	nut
D3	10	19	M8*9,5	M8*13	12	no
A3	13	30	M8*14,5	M8*16,5	13	yes
A4	16	35	M10*15,5	M10*20	16	yes
B4	19	45	M14*1,5*20	M14*1,5*28	20	yes



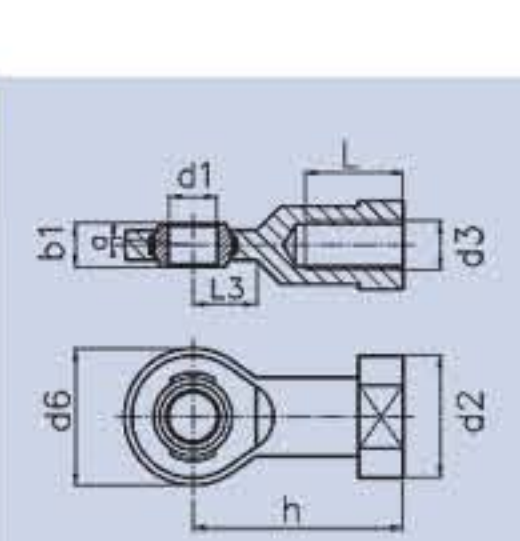
Clevises (Material 1.4305/AISI 303)

code	Ø d1 mm	g mm	A mm	b mm	L1 mm	L2 mm	Ø d2 mm
A5	8	16	16	8	42	32	M8
B9	10	20	20	10	52	40	M10



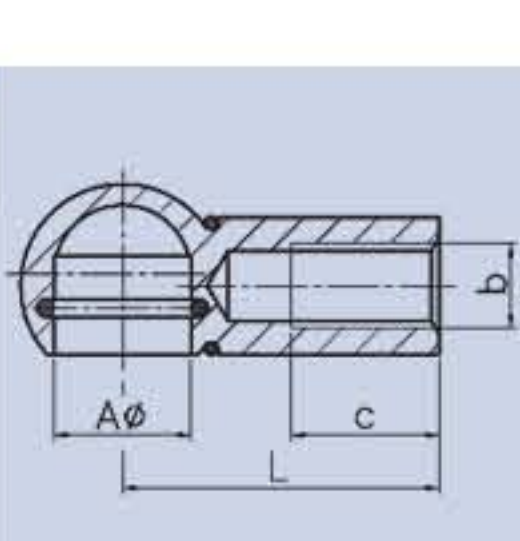
Hinge heads (Material 1.4057)

code		a	b1	d1	d2	d3	d6	h	L	L3
A7	GEKA7M8NI	8°	8	8	16	M8	24	36	16	12
A8	GEKA8M10NI	6°	9	10	19	M10	28	43	20	13



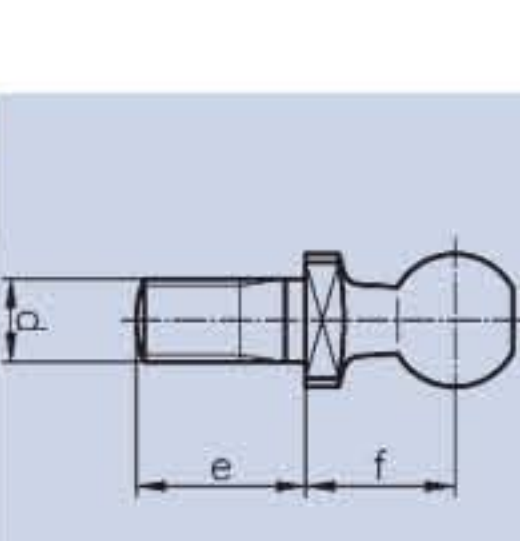
Ball sockets (Material 1.4305/AISI 303)

code	A	L	b*c
F3	10	19	M8*10
P3	13	30	M8*14



Bolts (Material 1.4305/AISI 303)

Order No.	A	d*e mm	f mm
KB10M8*13NI	10	M8*13	12
KB13M8*16.5NI	13	M8*16,5	13,5



Bolt for A5 (Material 1.4305/AISI 303)

code	Order No.	
M5	B0M5NI	measures see drawing

